



ShowMaster

MOBILE COMMUNITY STAGES

MOBILE SOUND SHELL COMMUNITY STAGES

ShowMaster™ Mobile Stage Features

Add a professional dimension to your outdoor events while saving time and man power. Century's **ShowMaster** Mobile Community stages offer a mobile acoustic shell stage featuring unmatched sound, lighting and visual controls, permitting a range of outdoor special events and performances throughout your entire community.

An onboard, self-contained hydraulic actuation system permits fast, easy, one-person push-button setup for a stage that is ready to go whenever needed.

A choice of stage models permits you to select the stage size best suited to your event and performance profile needs.

- **Smooth, Seamless Shell** - rugged, damage-resistant stage enclosure with an attractive professional appearance providing a visual backdrop, weather, protection, sound and lighting control, plus security between events. Acoustically active panels enhance audience experience during outdoor performances. Neutral gray interior color enhances skin tones while reducing glare. Smooth, seamless body panels are ideal for large, highly visible promotional graphics.
- **All-Weather Stage Deck** - exclusive, seamless, composite Duradeck provides a sound dampened textured surface. Folding front stage deck is the same length as the rear main deck, permitting one-person setup, as no additional assembly is required to achieve the full rated stage width. Stage deck height is adjustable using the built-in leveling jacks. Neutral gray deck color remains cool in direct sun unlike black stage decks.
- **Full-Length Stage Canopy** - extends beyond the front edge of the folding stage deck and the stage sides, providing maximum coverage and weather protection for the stage area on the three crucial sides, while also position the stage lighting beyond the end of the stage for optimum illumination of the stage area and performers.
- **Safety Features** - **ShowMaster**™ stages incorporate numerous safety features including dual canopy locking systems, control safety switches, and the industry's highest independently certified wind-load capacity.

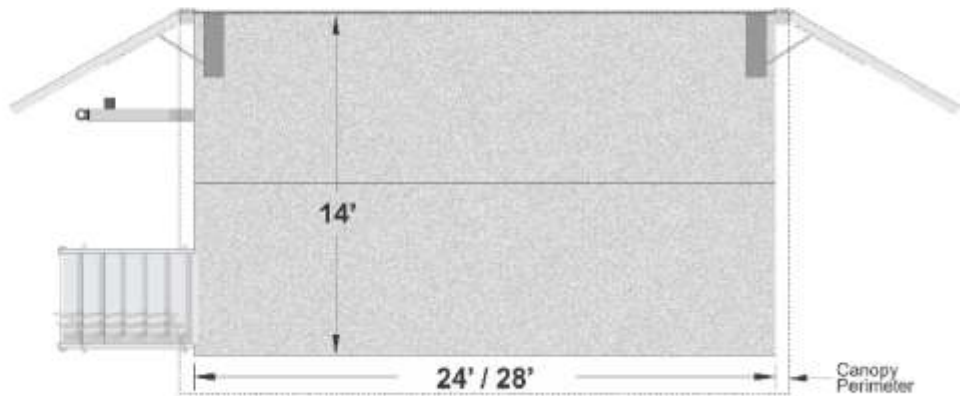


Side View



Front View

Century Industries
MSM2000 Series
ShowMaster
Mobile Sound Shell



Top View

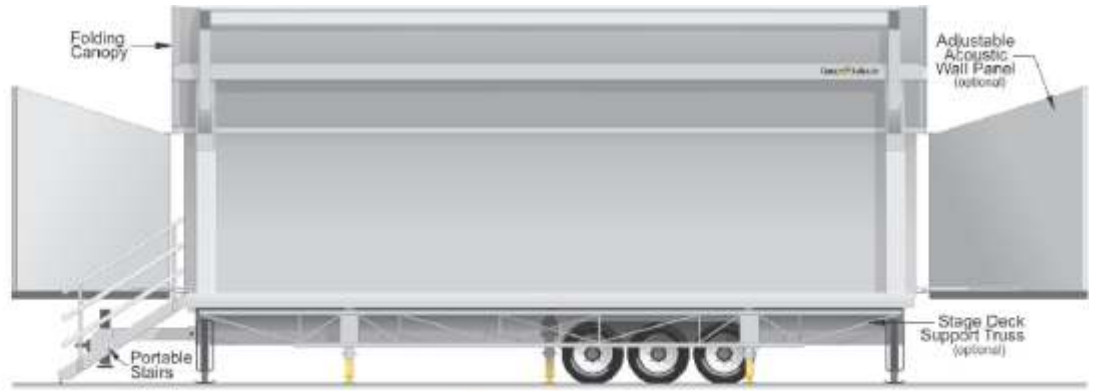
ShowMaster™ Mobile Stage Standard Features

- **Self-contained hydraulic system** – with remote control pendant, deep-cycle batteries, and battery charger , for fast, easy, one-person set up.
- **Powered protective canopy** - extends beyond the front edge and sides of the stage for full coverage, includes automatic mechanical and hydraulic dual-safety canopy locking systems
- **Powered stage deck** - all-weather folding stage deck that is equal in length to the main rear stage deck
- **Highway Rated Tires** - includes electric brakes on four wheels
- **Heavy-duty tandem axle suspension** - equalizer system allows towing over curbs and rough ground
- **Pintle towing coupler** – rugged lunette ring coupler (ball coupler available on request)
- **Heavy-duty Tongue Jack** – mounted on trailer tongue
- **Rugged support frame** – dual 18” deep steel-channel backbone main-frame
- **Crank leveling/support jacks** - four (4) 25,000lb capacity, corner jacks pivot for extra ground clearance during towing and reduced cranking during setup.
- **Breaker panel** – 125 amp capacity, (3) 20 amp breakers, 50ft of 10/3 W cable, receptacles at each inside end of stage, and in mechanical compartment
- **LED stage lighting** – two rows of dual-tube LED stage lights mounted at front edge of canopy and at the canopy hinge line providing maximum stage and performer illumination.
- **Storage lockers** – two curb-side compartments with locking hardware for equipment and systems security
- **Stairs** – (2) sets of steel stairs with enclosed ADA tread-plate treads, adjustable leveling legs, and removable safety handrails on two sides.
- **DOT required** - signal, marker lights, reflectors, and license light, with 12VDC connector cable
- **Stage operation training** - provided by factory representative (continental United States)

Model	Stage Deck Size
MSM2400	14'D x 24'L
MSM2800	14'D x 28'L

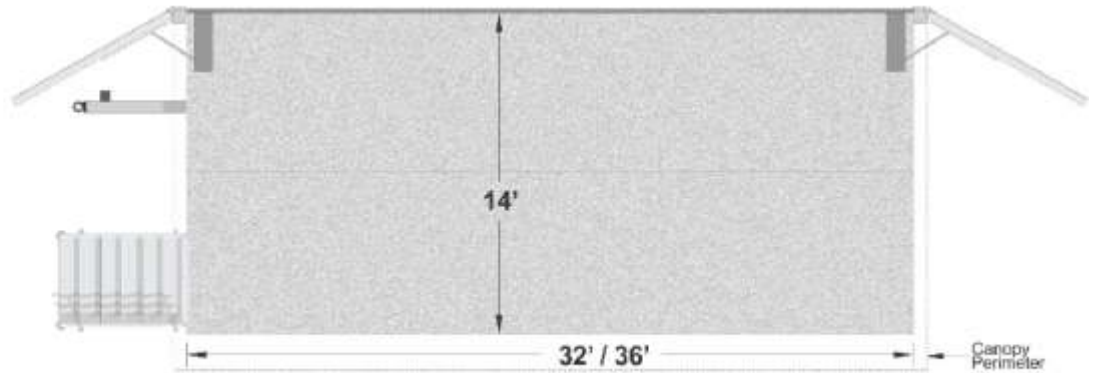


Side View



Front View

Century Industries
MSM3000 Series
ShowMaster
Mobile Sound Shell



Top View

ShowMaster™ Mobile Stage Standard Features

- **Self-contained hydraulic system** – with remote control pendant, deep-cycle batteries, and battery charger , for fast, easy, one-person set up.
- **Powered protective canopy** - extends beyond the front edge and sides of the stage for full coverage, includes automatic mechanical and hydraulic dual-safety canopy locking systems
- **Powered stage deck** - all-weather folding stage deck that is equal in length to the main rear stage deck
- **Highway Rated Tires** - includes electric brakes on six wheels
- **Heavy-duty tri - axle suspension** - equalizer system allows towing over curbs and rough ground
- **Pintle towing coupler** – rugged lunette ring coupler (Eball coupler available on request)
- **Heavy-duty Tongue Jack** – mounted on trailer tongue
- **Rugged support frame** – dual 18” deep steel-channel backbone main-frame
- **Crank leveling/support jacks** - four (4) 25,000lb capacity, corner jacks pivot for extra ground clearance during towing and reduced cranking during setup.
- **Breaker panel** – 125 amp capacity, E3) 20 amp breakers, 50ft of 10/3 t cable, receptacles at each inside end of stage, and in mechanical compartment
- **LED stage lighting** – two rows of dual-tube LED stage lights mounted at front edge of canopy and at the canopy hinge line providing maximum stage and performer illumination.
- **Storage lockers** – two curb-side compartments with locking hardware for equipment and systems security
- **Stairs** – (2) sets of steel stairs with enclosed ADA tread-plate treads, adjustable leveling legs, and removable safety handrails on two sides.
- **DOT required** - signal, marker lights, reflectors, and license light, with 12VDC connector cable
- **Stage operation training** - provided by factory representative (continental United States)

Model	Stage Deck Size
MSM3200	14'D x 32'L
MSM3600	14'D x 36'L