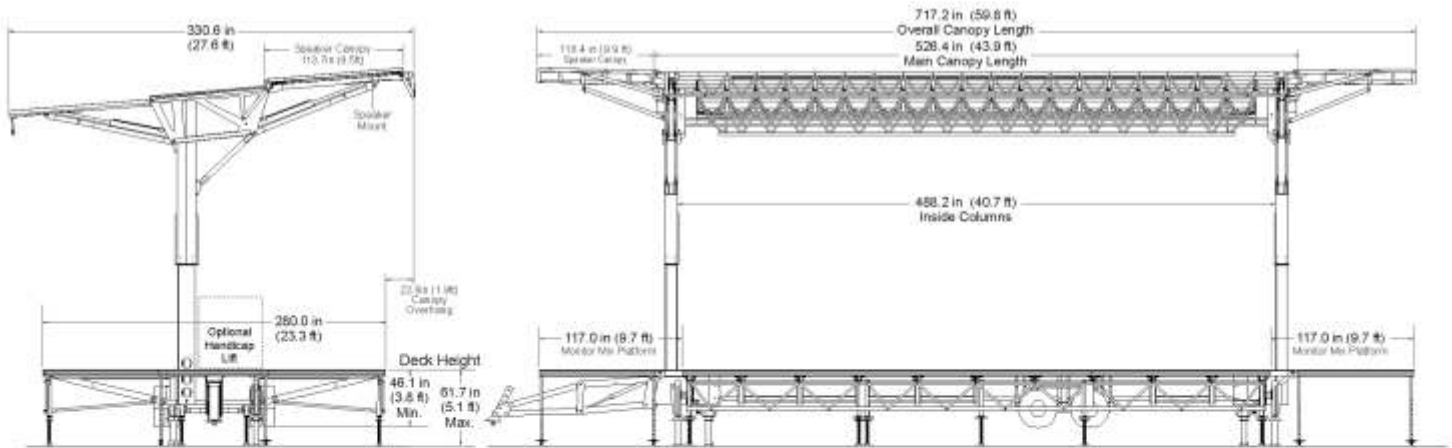




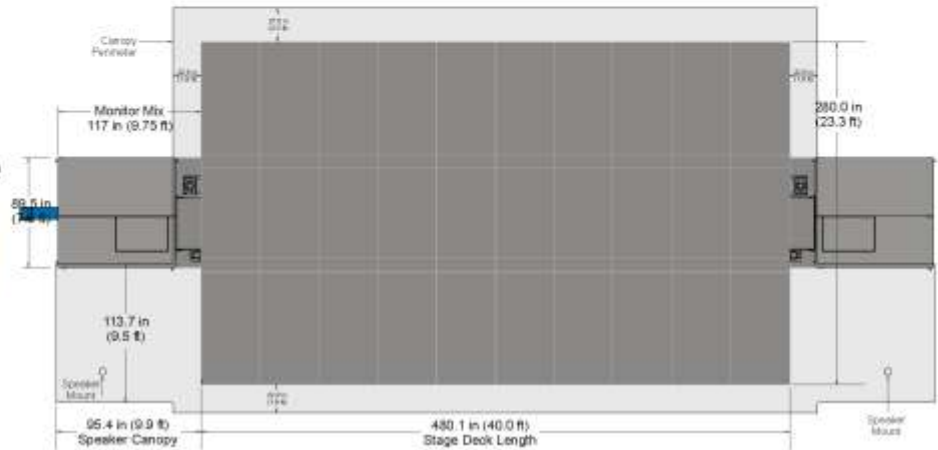
FrontRow Mobile Concert Stages
Century Industries 800/248-3371 www.centuryindustries.com



FrontRow 6040 Mobile Concert Stage



www.centuryindustries.com
(800) 248-3371



Attractive, professional, outdoor concert staging can be provided throughout your community with Century's FrontRow 6040 Mobile Concert Stage. With a base stage deck size of 40 feet by 24 feet deep, it will accommodate your larger special and concert events.

Unique design features provide enhanced audience enjoyment of performances, presenting an uncluttered appearance with improved audience and operator sightlines. The high capacity stage structure is designed to support typical concert lighting and sound equipment.

Century's FrontRow 6040 Mobile Concert Stage gives you the ability to offer outdoor remote site concert staging with significantly reduced set up time and manpower. Simplified operation and fewer loose parts, plus a self-contained

hydraulic actuation system expedites and simplifies set up, transforming the stage from highway configuration to open stage in just 30 - 45 minutes by two technicians.

Outdoor weather resistance is provided by the extensive use of aluminum and high-strength stainless steel for the stage structure. The FrontRow 6040 stage continues the Century tradition of providing a stage deck with a stable, solid feel.

The FrontRow 6040 Stage is designed to provide the features that you require in a concert stage, combined with the durability and ease of set up that you expect from a Century Mobile Stage.

Manufactured in the USA.

Stage Features

- 40ft x 24ft Stage Deck
- Deck height adjusts to 62"
- Frame mounted leveling/support jacks
- Telescoping roof with integral light supports
- Roof canopy overhangs stage deck on all sides
- Easily lower canopy during bad weather
- Weather resistant aluminum and SS structure
- Speaker Cover at each stage end
- No view-obstructing corner supports
- Fifth-wheel hitch lowers from sight
- Stage deck leveling/support trusses expedite set up
- Pass-through trailer frame storage areas
- High-capacity 24VDC powered hydraulic actuation
- Stage deck hinge filler panels not required

Trailer Features

- 44 ft. by 8 ½ ft trailer
- Fully enclosed trailer when folded for transport
- Fifthwheel/gooseneck towing hitch
- Tandem axle suspension
- Dual tires
- LED DOT marker and signal lights

Optional Features

- Folding monitor mix deck sections
- Stage deck leveling trusses
- Extension stage deck sections
- Built-in ADA handicap access lift
- Enclosed storage compartments
- Windwall
- Perimeter skirt
- Banners
- Generator